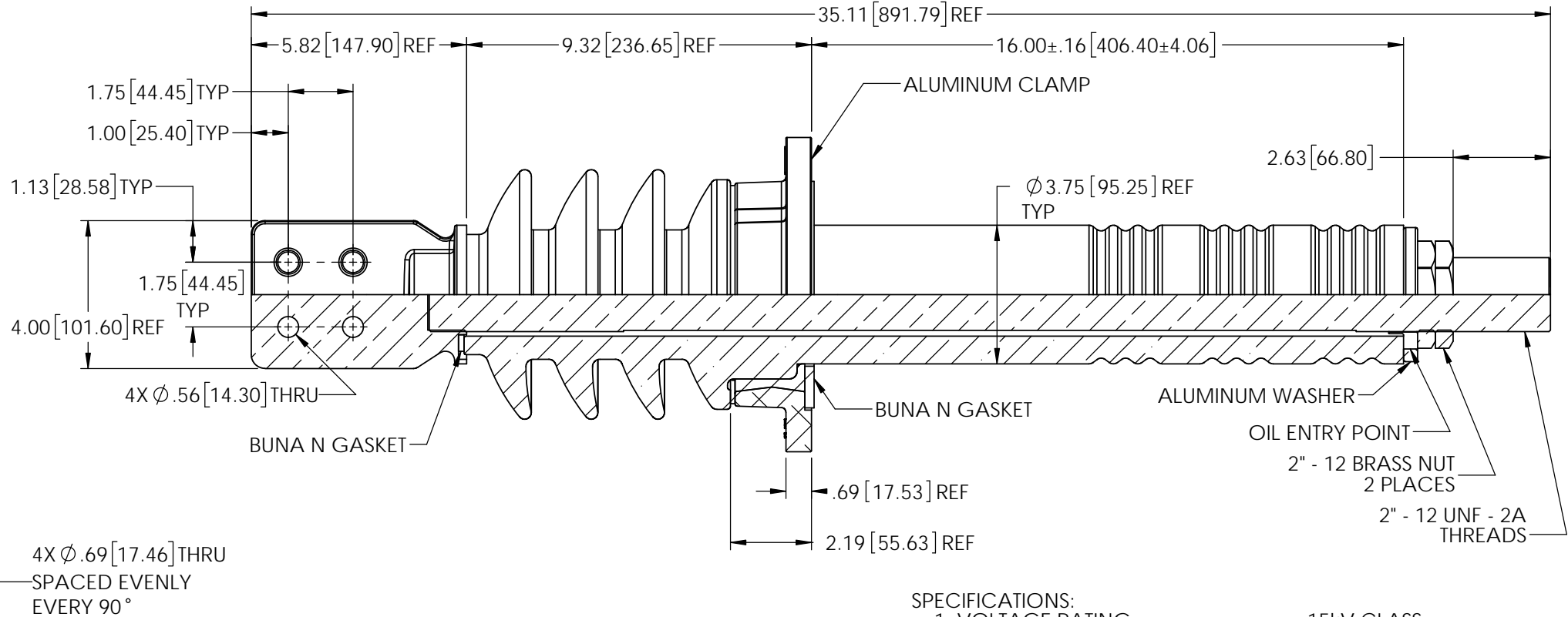
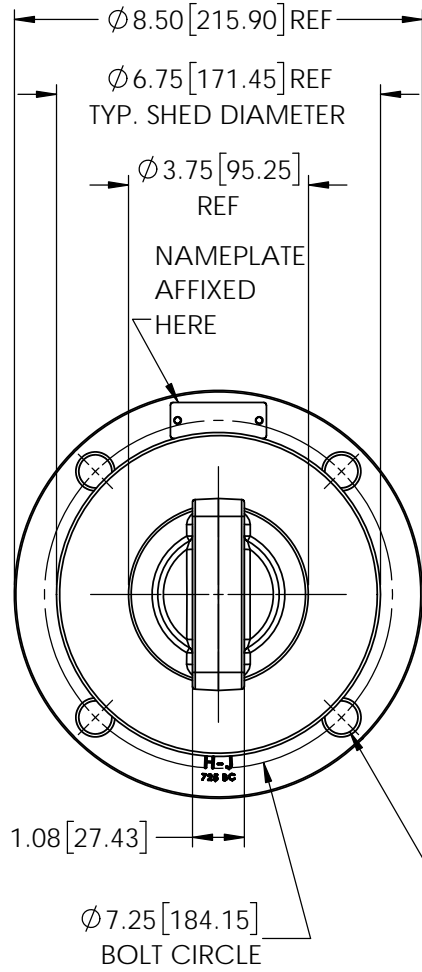


REVISIONS					
REV	DATE	ECN #	DESCRIPTION	BY	APPD



MATERIAL:
 STUD - COPPER C11000
 SPADE - C84400 TIN PLATED

NOTES:
 1. SHANK TO FIT INTO $\phi 4\text{-}1/4$ " TANK HOLE.
 2. FOR HORIZONTAL OR VERTICAL MOUNTING.
 3. MINIMUM COLD OIL LEVEL - 4" UP SHANK.

PORCELAIN NOTES:
 1. WET PROCESS ELECTRICAL PORCELAIN.
 2. GRAY GLAZE MUNSELL 5BG 7.0/0.4
 3. TOLERANCE $\pm 3\%$ WITH NOTHING LESS THAN $\pm .03$ ", UNLESS OTHERWISE NOTED ON DRAWING.

- SPECIFICATIONS:**
- VOLTAGE RATING 15kV CLASS
 - BASIC IMPULSE LEVEL 110kV BIL
 - NOMINAL CURRENT RATING 3142 AMPS @ 1000A / SQ.-IN.
 - CREEP DISTANCE (MINIMUM) 14.40 [365.76]
 - STRIKE DISTANCE (MINIMUM) 7.67 [194.82]
 - APPROXIMATE WEIGHT 62.45 LBS.

PROPRIETARY AND CONFIDENTIAL
 THE INFORMATION CONTAINED IN THIS DRAWING IS THE SOLE PROPERTY OF H-J ENTERPRISES, INC. ANY REPRODUCTION IN PART OR AS A WHOLE WITHOUT THE WRITTEN PERMISSION OF H-J ENTERPRISES, INC. IS PROHIBITED.

TOLERANCES (EXCEPT AS NOTED)	
DECIMAL	.X" = $\pm .1$ " .XX" = $\pm .06$ " .XXX" = $\pm .03$ "
ANGULAR	+/- 1 Degrees



H - J ENTERPRISES, INC. 3010 HIGH RIDGE BLVD. HIGH RIDGE, MO. 63049 USA PHONE 1-636-677-3421 FAX 1-636-376-1915		
15 kV CLASS POWER BUSHING		
MATERIAL (SEE DRAWING)		
CHK'D	APP'D	DRAWING NO.
		AS1728-0101
DRAWN BY	DATE	SCALE
MAD	2/25/2022	N.T.S.